



EBFA COVID-19 Policy - Non - Fulfilled Fixtures (Due to COVID-19 Issues)

EBFA Statement to Clubs/Teams

EBFA – Fixture Postponement Statement – Due to COVID-19 Positive Player(s) Tests

Currently the League cannot authorise a Postponement due to COVID-19 Positive Player(s) Test.

You and your Club must decide what is the viable options for your Club/Team, within the Rules of the Competition and Football Association/EBFA COVID-19 Guidance.

Please refer to FAQs (23-Sep-2020) issued by the Football Association – [Link](#)

Latest Football Association COVID-19 Links are here - [Link](#)

If you decide that your Club/Team cannot fulfil a fixture, then the EBFA fixture will be recorded as an unfulfilled fixture and reviewed under the Rules and Regulations of the Competition.

EBFA will treat COVID-19 issues related fixtures as we would normally deal with a non-fulfilled fixture, through the EBFA Rules and Regulations sub-committee.

EBFA will follow usual practice. If Teams don't supply evidence to corroborate their reason(s) for withdrawing from playing, then League will award the game against them and fine in accordance with the EBFA schedule of fines.

If EBFA agree with the evidence provided by the Club/Team as verification of the COVID-19 issues, then EBFA will not fine teams for unfulfilled fixture whilst the pandemic continues. EBFA will endeavour to reschedule the fixture taking into account scheduling dependencies.

The League needs to know the players from the team that are at the school which has been closed and the instruction from the school that the players should enter self-isolation.

All information provided is only to the League to validate the school instructions or NHS track and trace, that particular players in the team, have to self-isolate. Guardians when digitally signing the League Parent Guardian Agreement Form are referred to the League - privacy policies.

Evidence of verifiable COVID-19 issues must be provided to ensure that Club/Teams do not just cancel fixtures, blaming COVID-19 issues, when they have lack of players, etc.

Players returning from overseas, from an Island or Country that is on the England Quarantine List, and therefore have to self-isolate for 14 days, is NOT considered a valid COVID-19 issue for the non-fulfilled of an EBFA fixture.

The Verifiable Evidence of the COVID-19 issues, should be provided to the:

EBFA COVID-19 Officer, Ian Nile iannile@hotmail.com and

The Chair of the EBFA Rules and Regs committee Kevin Bavington
ebfa.rules@virginmedia.com.

Key Points

Only players who have tested positive for COVID-19 or those that have been advised to self-isolate by school or NHS Test & Trace, must refrain from participating in football.

Match play Football is NOT deemed 'close contact', therefore teammates of confirmed cases or players that have NOT been advised to self-isolate can continue to participate, unless they experience symptoms.

The key decision in participation is symptoms:

All players, team officials, Club officials, volunteers and spectators must undergo a self-assessment for any Covid-19- symptoms, before participating in football (training and matches).

No-one should leave home to participate in football if they, or someone they live with, has any of the following:

- A high temperature (above 37.8°C);
- A new, continuous cough;
- A loss of, or change to, their sense of smell or taste

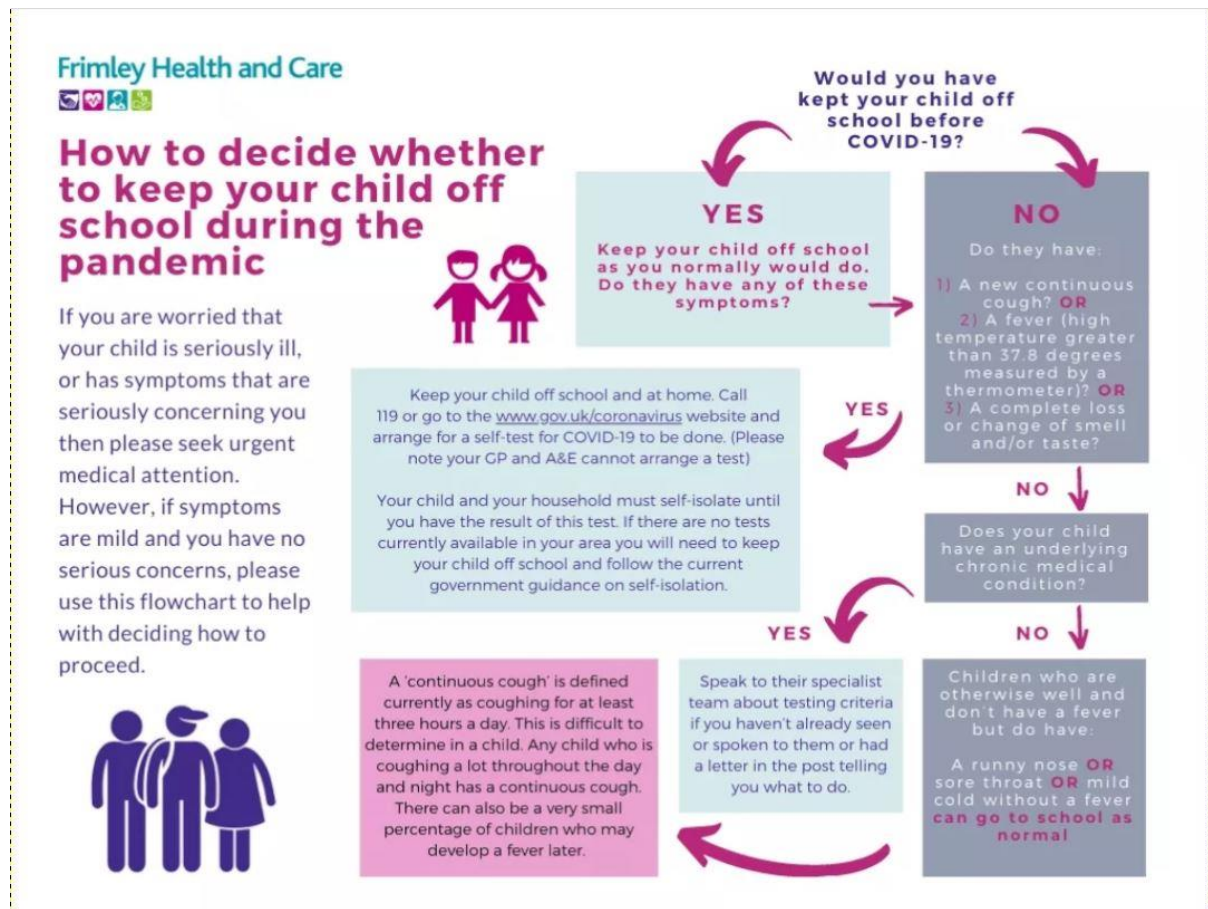
Apologies for any inconvenience caused, but the disruption caused by COVID-19 is unprecedented and guidelines are continuously changing. The League will continue to review its policy, based on Football Association and Government directives, to decide the best course of action for the safety of all who participating in EBFA football.

Social Distancing Reminder:

Supporters, parents, and other spectators should remain socially distanced while attending events. Spectator groups must be restricted to discrete six-person gathering limits and spread out, in line with wider Government guidance, ensuring space for team, club and league officials, coaches and substitutes.

Detailed below is an information sheet from Frimley Health Care on "How To decide whether to keep your child off school during a pandemic"

The same principles would apply if the title was “How To decide whether to keep your child off participating in Football training and match during a pandemic”



Regards

EBFA October 2020.

Version 2.01a